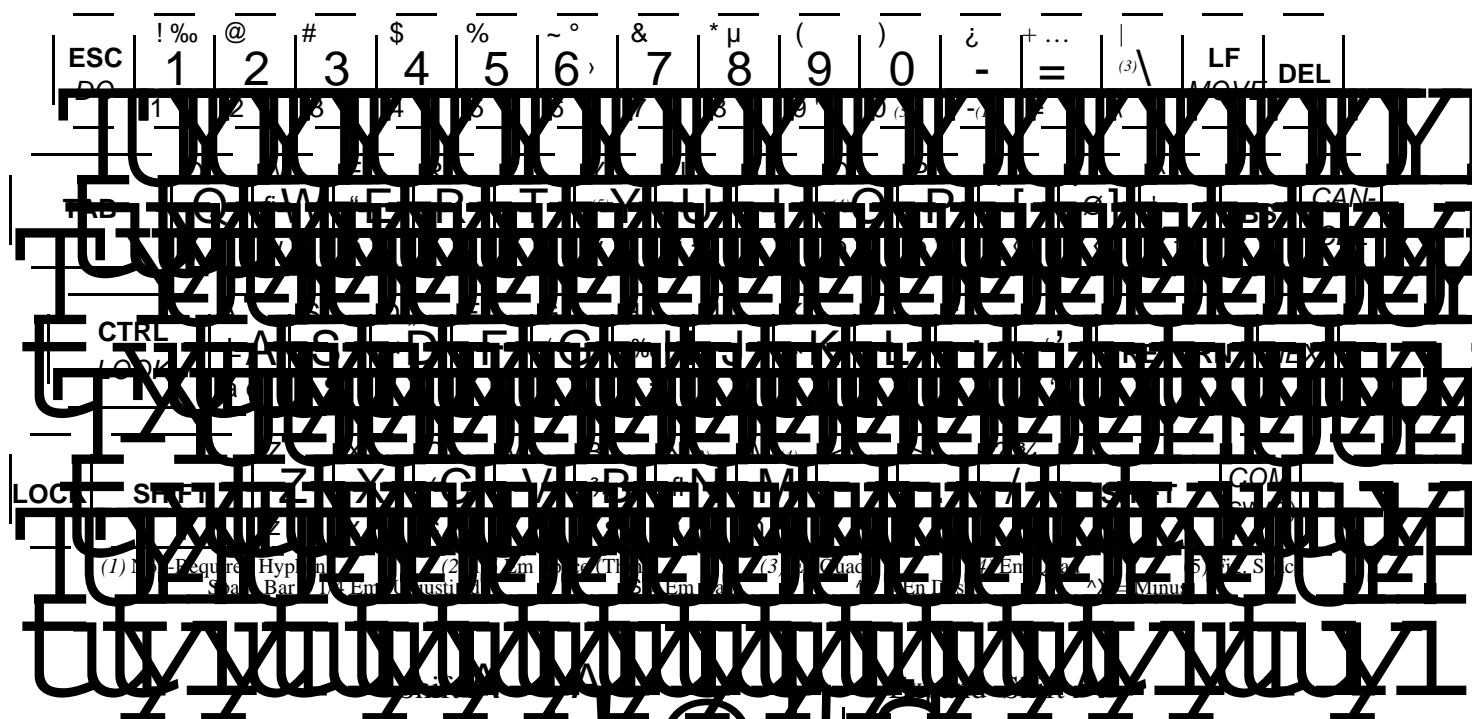


ALTO 1 and new ALTO II keyboard
BravoX APS Keys



Control A

•

@

#

Control Shift A

A

a

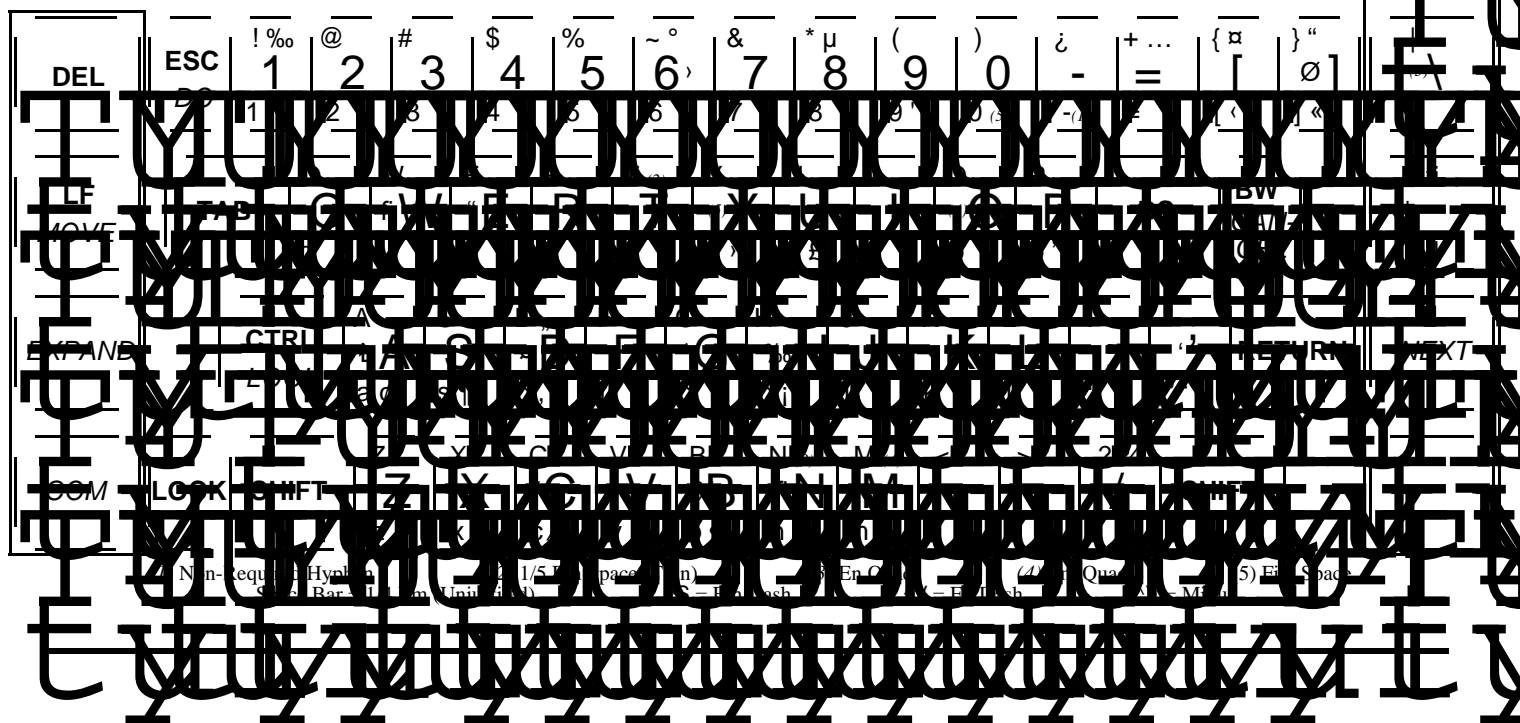
¢

Expand A

1 2 3 4

Old ALTO II Keyboard
BravoX APS Keys

COM
(SWAT)



Helvetica Special Character Locations

^x=Control x x+= x CMD y
 NOTE: In most programs Control and Expand characters are not direct entry.

CHAR.	KEY	OCTAL	NAME	CHAR.	KEY	OCTAL	NAME
«]	253	Accent, Acute+	236	En Leader	
« ^k	013	Accent, Acute (zero width)	-.....-+	337	Hyphen, Non-Required	
fi ^+	256	Accent, Breve f+ or ^f	220 or 6	Ligature ff	
fi ^w	027	Accent, Breve (zero width) q+ or ^q	221 or 21	Ligature ffi	
' 9+	251	Accent, Circle r+ or ^r	222 or 22	Ligature ffl	
' ^_	037	Accent, Circle (zero width) i+ or ^t	223 or 24	Ligature fi	
< [+	254	Accent, Circumflex l+ or ^u	224 or 25	Ligature fl	
< ^e&^k	Accent, Circumflex (zero width) u.c.- or ^x	235 or 30	Minus Sign	
“ }+	252	Accent, Grave	”..... p+	272	Paragraph Sign	
“ ^e	005	Accent, Grave (zero width) ++	274	Plus-Minus Sign	
Ł :+	350	Accent, Hachek M+ or ^o	231 or 17	Quad, Em	
Ł ^a	001	Accent, Hachek (zero width) N+ or ^\	230 or 34	Quad, En	
Ø ;+	351	Accent, Low Dot	‘..... ’+ or ^’	140 or 7	Quote Open	
Ø ^]	035	Accent, Low Dot (zero width)	¶..... s+	266	Section Sign	
fl _+	257	Accent, Macron 0+ or ^y	232 or 31	Space, Figure	
fl ^n	016	Accent, Macron (zero width) T+	237	Space, Thin (1/5 Em)	
› y+	255	Accent, Tilde	%oo.....!+ or ^h	275 or 10	Spanish Exclamation	
› ^~	036	Accent, Tilde (zero width)	¾..... ?+ or ^b	276	or 2 Spanish Question Mark	
ä {+	250	Accent, Umlaut	µ..... *+	265	Star Sign	
ä ^d	004	Accent, Umlaut (zero width)	—..... L+	261	Sterling Sign	
• b+	267	Bullet Sign G+	200	Umlaut A	
/ c+ or ^c	244 or 3	Cedilla c g+	240	Umlaut a	
° ~+	260	Cent Sign H+	201	Umlaut O	
° A+	202	Circle A	j..... h+	241	Umlaut o	
¢ a+	242	Circle a	£..... u+	243	Umlaut u	
, d+	270	Dagger Sign	¿..... -+	277	Under Score	
„ D+	271	Dagger, Double Sign				
 m+ or ^s	234 or 23	Dash, Em				