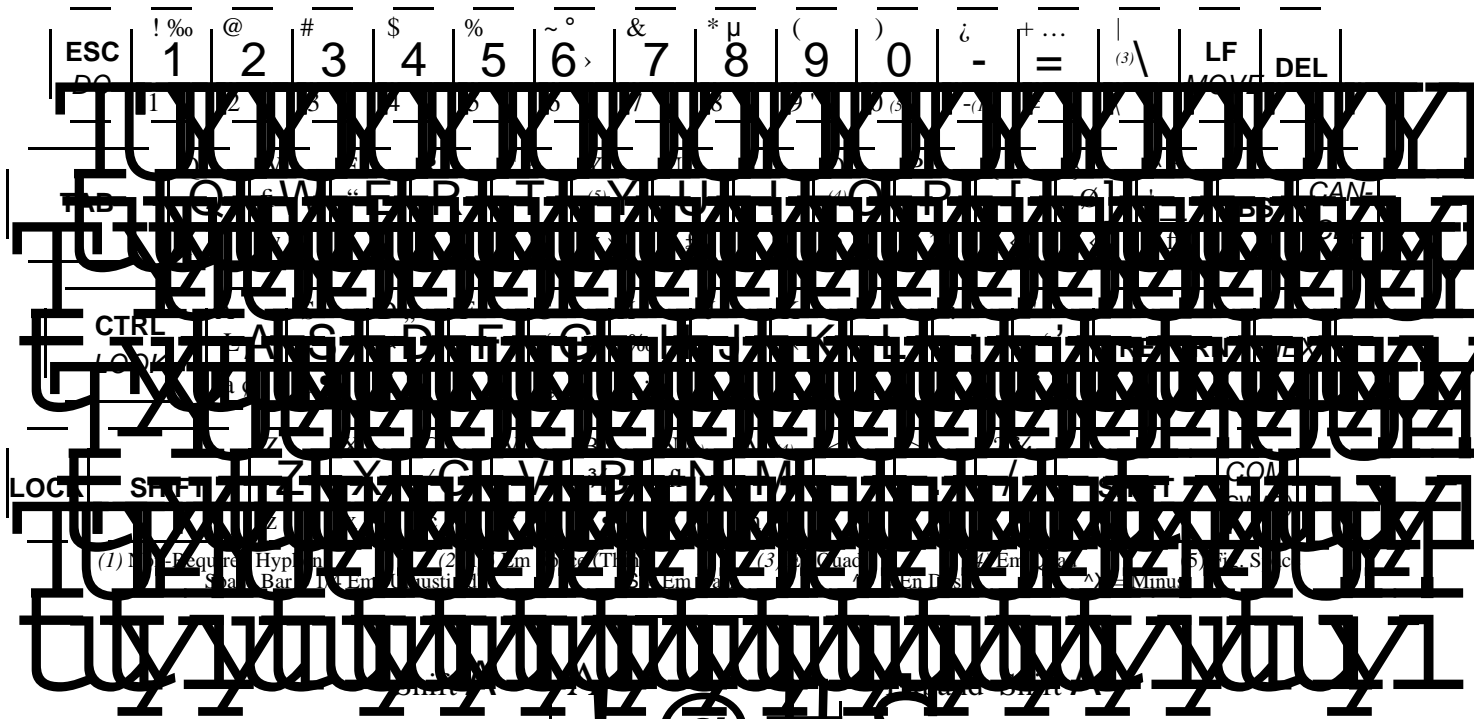
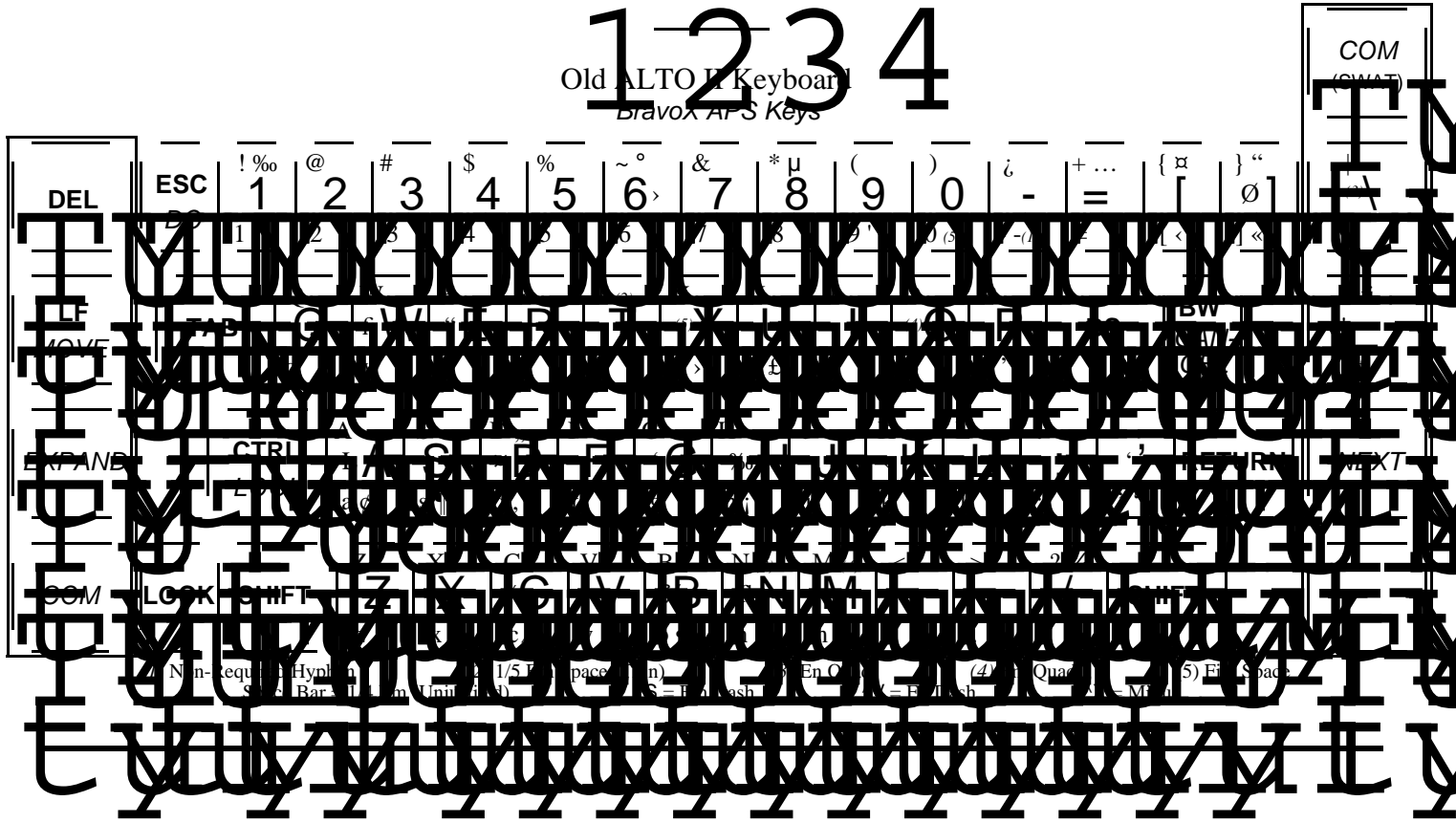


ALTO 1 and new ALTO II keyboard
BravoX APS Keys



Control A | ! @ # \$ | Control Shift A
A a ç Expand A

1 2 3 4
Old ALTO II Keyboard
BravoX APS Keys



TimesRoman Special Character Locations

^x=Control x x+= x CMD y
 NOTE: In most programs Control and Expand characters are not direct entry.

CHAR.	KEY	OCTAL	NAME	CHAR.	KEY	OCTAL	NAME
<<.....]	+	253	Accent, Acute+	236	En Leader
<<..... ^k	013	Accent, Acute (zero width)	-.....-+	337	Hyphen, Non-Required
fi..... ^+	256	Accent, Breve f+ or ^f	220 or 6	Ligature ff
fi..... ^w	027	Accent, Breve (zero width) q+ or ^q	221 or 21	Ligature ffi
'	9+	251	Accent, Circle r+ or ^r	222 or 22	Ligature ffl
'	^_	037	Accent, Circle (zero width) i+ or ^t	223 or 24	Ligature fi
<	[+	254	Accent, Circumflex l+ or ^u	224 or 25	Ligature fl
<	^e&^k	Accent, Circumflex (zero width) u.c.- or ^x	235 or 30	Minus Sign
“	}+	252	Accent, Grave	”	p+	272	Paragraph Sign
“	^e	005	Accent, Grave (zero width) ++	274	Plus-Minus Sign
Ł	:+	350	Accent, Hachek M+ or ^o	231 or 17	Quad, Em
Ł	^a	001	Accent, Hachek (zero width) N+ or ^\	230 or 34	Quad, En
Ø	;+	351	Accent, Low Dot	‘	'+ or ^'	140 or 7	Quote Open
Ø	^]	035	Accent, Low Dot (zero width)	¶	s+	266	Section Sign
fl	_+	257	Accent, Macron 0+ or ^y	232 or 31	Space, Figure
fl	^n	016	Accent, Macron (zero width) T+	237	Space, Thin (1/5 Em)
>	y+	255	Accent, Tilde	%o.....!	+ or ^h	275 or 10	Spanish Exclamation
>	^~	036	Accent, Tilde (zero width)	¾..... ?+	or ^b	276	or 2 Spanish Question Mark
ǣ	{+	250	Accent, Umlaut	μ	*+	265	Star Sign
ǣ	^d	004	Accent, Umlaut (zero width)	—..... L+	261	Sterling Sign
•	b+	267	Bullet Sign G+	200	Umlaut A
/	c+ or ^c	244 or 3	Cedilla c g+	240	Umlaut a
°	~+	260	Cent Sign H+	201	Umlaut O
.....	A+	202	Circle A	j	h+	241	Umlaut o
¢	a+	242	Circle a	£	u+	243	Umlaut u
,	d+	270	Dagger Sign	¿	-+	277	Under Score
„.....	D+	271	Dagger, Double Sign				
.....	m+ or ^s	234 or 23	Dash, Em				